

# TR90cn-0,5

**ACTR905C**



Ratio OUTPUT  
Rapporto  
**1:2 speeder**



RPM OUTPUT  
Velocità  
**8.000 min<sup>-1</sup>**



Max. axial load  
Max. carico assiale  
**200 N**



Torque  
Momento torcente  
**8 Nm**

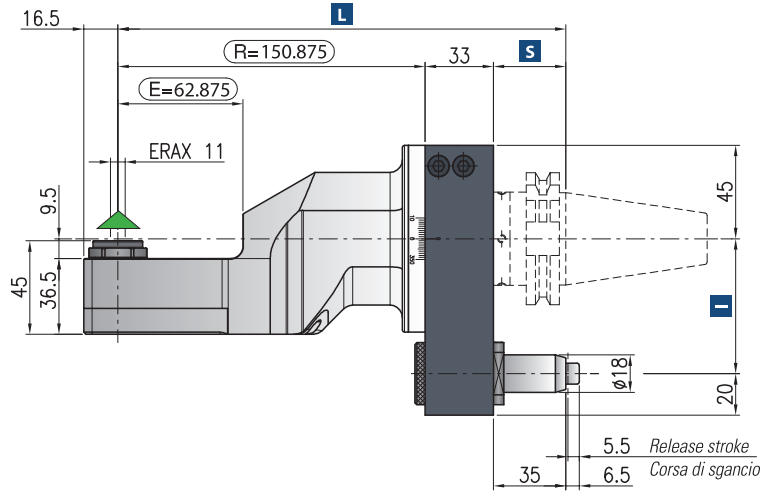
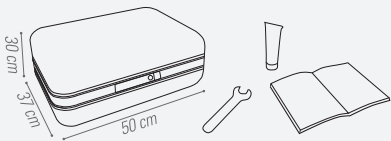


Weight  
Peso  
**6 kg**

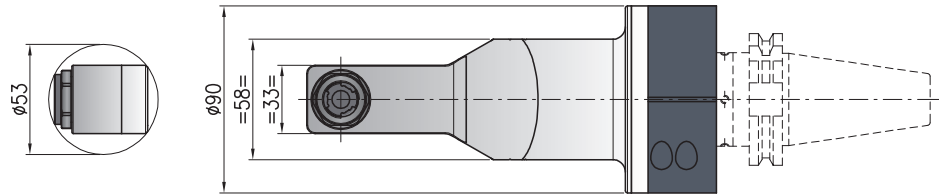


Collet  
Pinza  
**ER-AX-11 (ø 0,5/7 mm)**

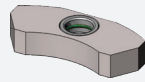
**\* STANDARD EQUIPMENT INCLUDES:**



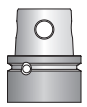
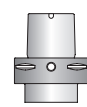
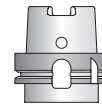
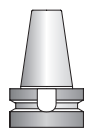
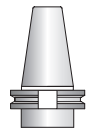
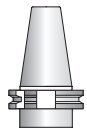
Minimum diameter without tool  
Diametro minimo senza utensile



Retaining block / Tassello di ritegno / Stop-Block  
**NOT INCLUDED - NON INCLUSO**



Direction of rotation same as machine spindle / senso di rotazione uguale al mandrino



Shank/Cono	DIN-69871	CAT	MAS-BT		HSK		CAPTO		KM
Size/Grandezza	40	50	40	50	63-80	100	C5-C6	C8	63
<b>I</b>	65-80	80-(110*)	65-80-(110*)	80-(110*)	65-80-(110*)	80-(110*)	65-80-(110*)	80-(110*)	65-80-(110*)
<b>S</b>	35	35	35	41	42	45	38	40	40
<b>L</b>	218,875	218,875	218,875	224,875	225,875	228,875	221,875	223,875	223,875

Dual contact spindles available/Disponibilità coni a doppio contatto  
\*optional

Non interchangeable input drive shank/ Coni di attacco non intercambiabili

Opzione / Option



bar max  
**12**

Coolant through pin  
Adduzione refrigerante attraverso il perno